

**Bath Seat with Back**



LOC02  
\$15/wk  
\$30/mo

**Bath Seat without Back**



LOC03  
\$15/wk  
\$30/mo

**Bath Transfer Bench with Back**

Specify left or right handle, bariatric model available



LOC01  
\$25/wk  
\$50/mo

**Commode, Bariatric**

Requires pail purchased separately: \$14.95, Optional splash guard: \$11.95



LOC09  
\$30/wk  
\$50/mo

**Commode, Shower**

Requires pail purchased separately: \$14.95, Optional splash guard: \$11.95



LOC09  
\$35/wk  
\$60/mo

**Commode, Stationary**

Requires pail purchased separately: \$14.95, Optional splash guard: \$11.95



LOC09  
\$20/wk  
\$40/mo

**Commode, Wheeled**

Requires pail purchased separately: \$14.95, Optional splash guard: \$11.95



LOC10  
\$30/wk  
\$50/mo

**Bed Helper Rail**



LOC19  
\$10/wk  
\$20/mo

### Bed Rails for Electric Bed



LOC18  
\$25/wk  
\$35/mo

### Bed, Electric Hospital 3-Position

Brown. Max. 350lbs. Delivery fee includes set-up. Client must have space clear for bed or labour charge applicable.



LOC14  
\$195/wk  
\$195/mo

### Over Bed Table



LOC22  
\$25/wk  
\$40/mo

### Lift Chair, Vinyl 2-Position

Client must have space clear and ready for chair.



LOC28  
\$100/wk  
\$175/mo

### Patient Lift with Wheels

Requires sling purchased separately



LOC24  
\$75/wk  
\$250/mo

### Ramp, 5 Feet Long

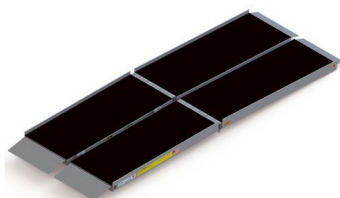
Recommend 1 inch rise per foot of ramp



LOC37  
\$25/wk  
\$35/mo

### Ramp, 6 Feet Long

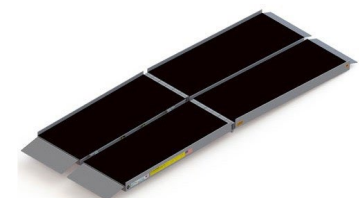
Recommend 1 inch rise per foot of ramp



LOC38  
\$25/wk  
\$45/mo

### Ramp, 8 Feet Long

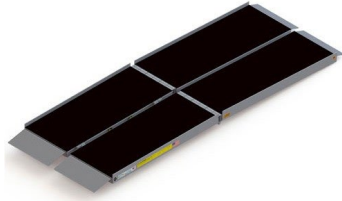
Recommend 1 inch rise per foot of ramp



LOC38  
\$35/wk  
\$45/mo

**Ramp, 10 Feet Long**

Recommend 1 inch rise  
per foot of ramp



LOC38  
\$40/wk  
\$65/mo

**Rollator with Seat and Handbrakes**



LOC42  
\$40/wk  
\$65/mo

**Scooter, 3-Wheel or 4-Wheel Electric**

Batteries included



LOC35  
\$95/wk  
\$250/mo

**Travel Buggy CITY**

Batteries included



LOC34  
\$200/wk  
\$350/mo

**Super Pole, White**

Installs between floor  
and ceiling by turning a  
jackscrew



LOC55  
\$45/wk  
\$45/mo

**Knee Walker, 4-Wheel Steerable**



LOC70  
\$45/wk  
\$70/mo

**Walker, 2-Wheel Lightweight Folding**



LOC40  
\$30/wk  
\$40/mo

**Wheelchair, Standard**

16-, 18- or 20x16-inch  
seat. Cushion not includ-  
ed. Elevating legrests  
optional: \$15/month per  
side



LOC30  
\$50/wk  
\$80/mo

### Wheelchair, Transport

17- or 19-inch. Cushion not included.



LOC29  
\$50/wk  
\$80/mo

### Elevating Legrest

Left or right side



LOC73  
\$15/wk  
\$15/mo

### CPM Machine, Optiflex-K1 - Knee

Requires sheepskin pad set purchased separately: \$59.95



LOC63  
\$425/wk  
\$425/mo

### Cryo Cuff Cooler

Requires cuff purchased separately: starting at \$136.95



LOC53  
\$15/wk  
\$25/mo

### Rental Terms

- A valid credit card is required for rental.
- Fees for delivery and pick-up (if requested) are due at the time of rental.
- Pick-up fee will be credited if rental is returned to store.
- Equipment is sanitized and supplied in in good working order.
- Rental equipment models may differ from pictures shown.
- We reserve the right to apply a cleaning surcharge for equipment returned in visibly soiled condition.
- Lost or damaged equipment will be charged at replacement price.

### Delivery, Pick-Up and Other Fees

Small Items, Manual Wheelchairs  
Large Items (Beds, Lift Chairs, Scooters, Power Wheelchairs)  
Oversized Items requiring >2 personnel to move  
Surcharge for equipment returned in visibly soiled condition  
Additional labour if client owned furniture must be moved  
(signed damage waiver required)

### Local <20km

\$25 each way  
\$50 each way  
\$100 each way

### GTA 20-50km

\$50 each way  
\$85 each way  
\$150 each way  
\$25 minimum  
\$34.50/each half hour or part thereof

## Rental Terms

- A valid credit card is required for rental.
- Fees for delivery and pick-up (if requested) are due at the time of rental.
- Pick-up fee will be credited if rental is returned to store.
- Equipment is sanitized and supplied in in good working order.
- Rental equipment models may differ from pictures shown.
- We reserve the right to apply a cleaning surcharge for equipment returned in visibly soiled condition.
- Lost or damaged equipment will be charged at replacement price.

## Delivery, Pick-Up and Other Fees

	<b>Local &lt;20km</b>	<b>GTA 20-50km</b>
Small Items, Manual Wheelchairs	\$25 each way	\$50 each way
Large Items (Beds, Lift Chairs, Scooters, Power Wheelchairs)	\$50 each way	\$85 each way
Oversized Items requiring >2 personnel to move	\$100 each way	\$150 each way
Surcharge for equipment returned in visibly soiled condition		\$25 minimum
Additional labour if client owned furniture must be moved (signed damage waiver required)	\$34.50/each half hour or part thereof	